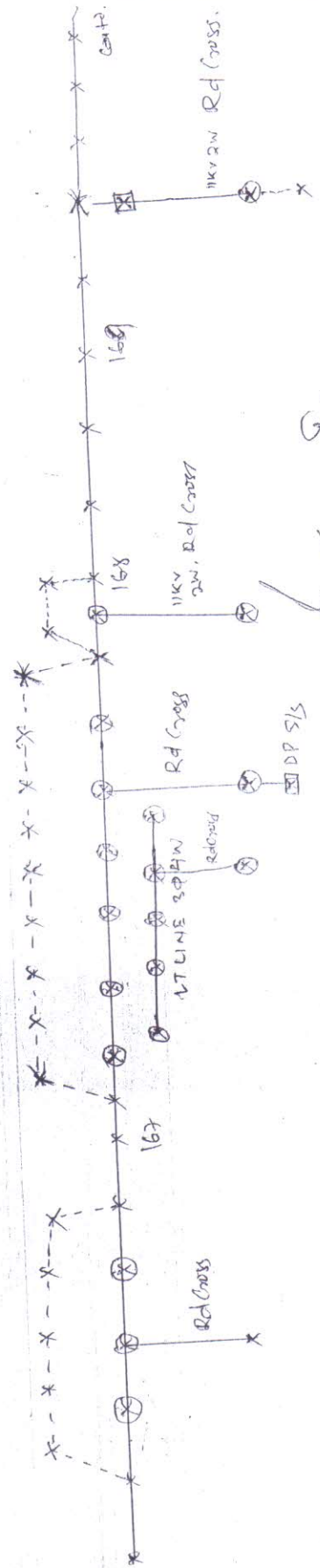
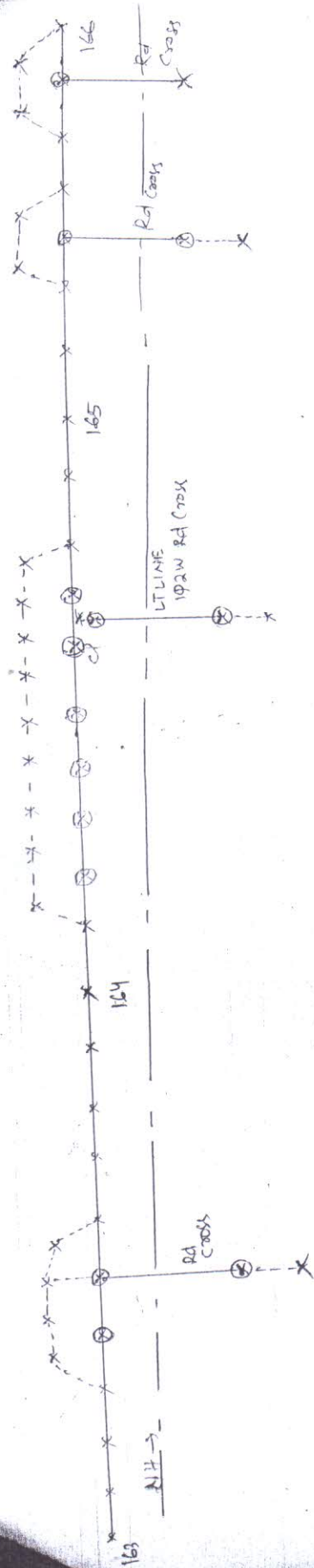
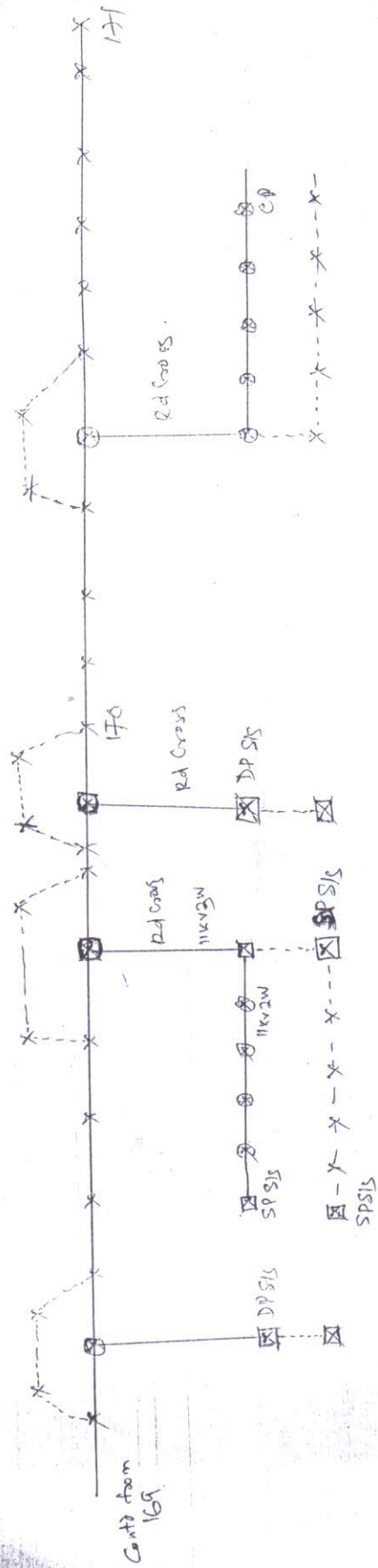


SINGLE LINE DIAGRAM



S.D.A. (E)
 10/10/2011
 By



Abbreviations

- ⊠ → Poles to be shifted.
- x-x-x → Existing 11KV/LT.
- x---x---x → Proposed 11KV/LT
- ⊠ → Sub station.

S.D.O. (E)
Muzaffargarh
S.C.

Handwritten signature and text.

SHIFTING OF PROPOSED 11KV LINES WITHIN PROW OF NH-215 FROM

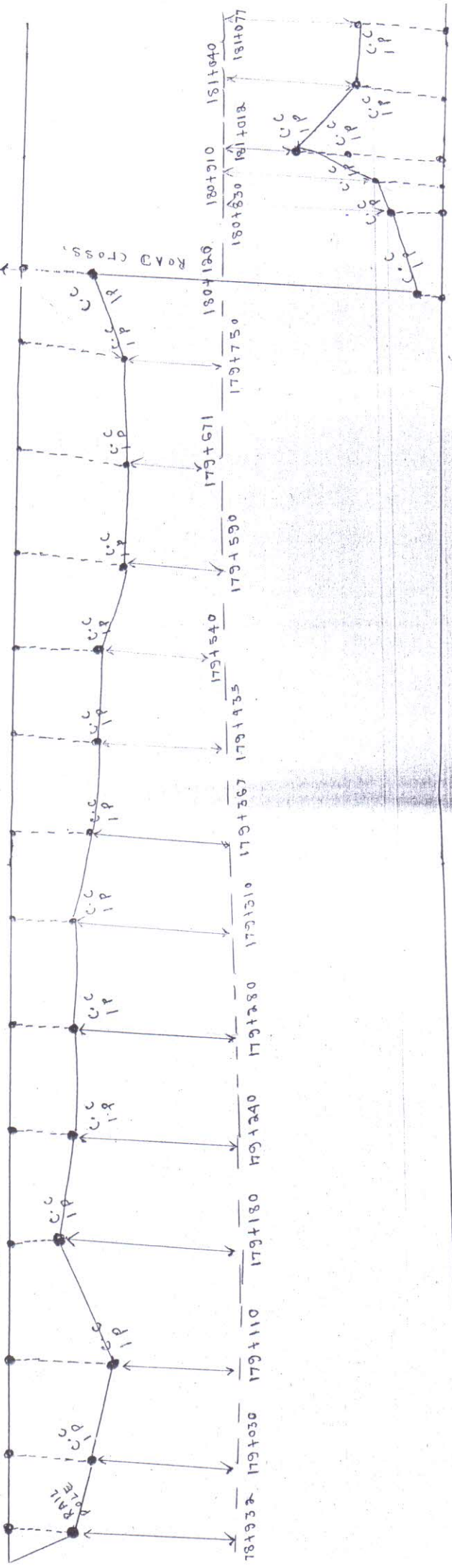
RAJA MUNDAN

RE MULI

BELE PADA
LINE FEEDER

BELE PADA
LINE FEEDER

TATA SPONGE
AREA



[Signature]
JUNIOR ENGINEER
ELECT. NESCO, JODHA

[Signature]
Sub-Divisional Officer
Jodha Electrical Sub-Division
NESCO, Jodha

[Signature]
Executive Engineer
JODHA ELECTRICAL DIVISION
NESCO, JODHA

SHIFTING OF PROPOSED 11KV LINES WITHIN PROX OF NH-215 FROM KM 172 TO



[Signature]
 JUNIOR ENGINEER
 JODA, NESCO JODA

[Signature]
 Sub-Divisional Officer
 Joda Electrical Sub-Division
 NESCO Joda

[Signature]
 Executive Engineer
 JODA ELECTRICAL DIVISION
 NESCO JODA

25 MYSIS OF JOSHAI PETROL PUMP

